



**BRM**<sup>®</sup>  
Extremities

## Silktoe<sup>®</sup>

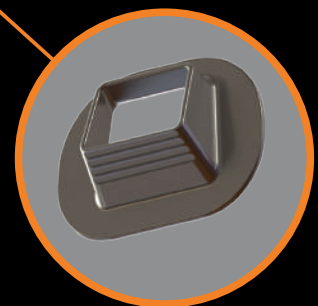
**Anatomical design**  
5 right and 5 left sizes  
2 pressfit grommets per implant



Right



Left



Osteoarthritis  
Rheumatoid arthritis  
Destroyed articular surfaces  
Ankylosed joint  
Limited range of joint motion



**IMPLANT**

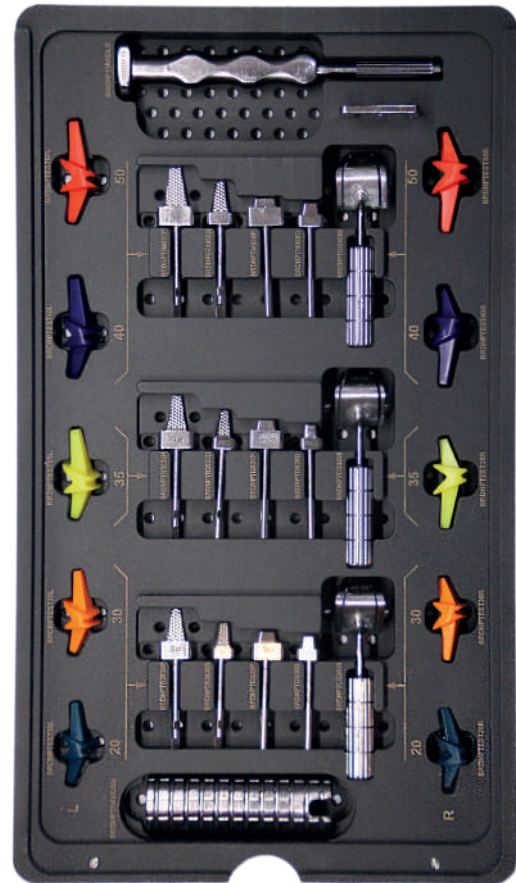
- **Spacer**  
Silicone elastomer
- **Grommets**  
Titanium alloy
- **Sterilization**  
Ethylene Oxide (EtO)

**Main contraindications:**

- Active sepsis
- Neurological and/or circulatory and/or skin and/or bone irreparable deficiency and/or non-functioning musculotendinous system
- Psychologically unsuitable patient

| CODE         | DESCRIPTION                    |
|--------------|--------------------------------|
| BRDNEWP2020L | Silktoe Spacer - Size 20 Left  |
| BRDNEWP3030L | Silktoe Spacer - Size 30 Left  |
| BRDNEWP3535L | Silktoe Spacer - Size 35 Left  |
| BRDNEWP4040L | Silktoe Spacer - Size 40 Left  |
| BRDNEWP5050L | Silktoe Spacer - Size 50 Left  |
| BRDNEWP2020R | Silktoe Spacer - Size 20 Right |
| BRDNEWP3030R | Silktoe Spacer - Size 30 Right |
| BRDNEWP3535R | Silktoe Spacer - Size 35 Right |
| BRDNEWP4040R | Silktoe Spacer - Size 40 Right |
| BRDNEWP5050R | Silktoe Spacer - Size 50 Right |

**INSTRUMENTS**



| CODE          | DESCRIPTION                                |
|---------------|--|
| SET.SILKTOE   | Silktoe Instruments Set (full box)         |
| BRDNEWPTSBOX  | Silktoe Sterilization Box (no instruments) |
| BRDNPTHANDLE  | Multifunctional Silktoe Handle             |
| BRDNPTHANDSU  | Silktoe Handle Sliding Unit                |
| BRDNPTCG2030  | 20-30 Silktoe Cutting Guide                |
| BRDNPTCG3535  | 35 Silktoe Cutting Guide                   |
| BRDNPTCG4050  | 40-50 Silktoe Cutting Guide                |
| BRDNPTCGMASK  | Silktoe Cutting Guide Mask                 |
| BRDNPTR2030P  | 20-30 Silktoe Metatarsal Rasp              |
| BRDNPTR3535P  | 35 Silktoe Metatarsal Rasp                 |
| BRDNPTR4050P  | 30-40 Silktoe Metatarsal Rasp              |
| BRDNPTR2030D  | 20-30 Silktoe Phalangeal Rasp              |
| BRDNPTR3535D  | 35 Silktoe Phalangeal Rasp                 |
| BRDNPTR4050D  | 40-50 Silktoe Phalangeal Rasp              |
| BRDNPTTEST20L | 20 Left Silktoe Trial Sizer (Green)        |
| BRDNPTTEST30L | 30 Left Silktoe Trial Sizer (Orange)       |
| BRDNPTTEST35L | 35 Left Silktoe Trial Sizer (Yellow)       |
| BRDNPTTEST40L | 40 Left Silktoe Trial Sizer (Blue)         |
| BRDNPTTEST50L | 50 Left Silktoe Trial Sizer (Red)          |
| BRDNPTTEST20R | 20 Right Silktoe Trial Sizer (Green)       |
| BRDNPTTEST30R | 30 Right Silktoe Trial Sizer (Orange)      |
| BRDNPTTEST35R | 35 Right Silktoe Trial Sizer (Yellow)      |
| BRDNPTTEST40R | 40 Right Silktoe Trial Sizer (Blue)        |
| BRDNPTTEST50R | 50 Right Silktoe Trial Sizer (Red)         |
| BRDNPTI2030P  | 20-30 Silktoe Metatarsal Grommets Impactor |
| BRDNPTI3535P  | 35 Silktoe Metatarsal Grommets Impactor    |
| BRDNPTI4050P  | 30-40 Silktoe Metatarsal Grommets Impactor |
| BRDNPTI2030D  | 20-30 Silktoe Phalangeal Grommets Impactor |
| BRDNPTI3535D  | 35 Silktoe Phalangeal Grommets Impactor    |
| BRDNPTI4050D  | 40-50 Silktoe Phalangeal Grommets Impactor |